

PROJECT: Campion Yoked Sweater

This is a classic sweater knitted using a combination of neutral and vibrant colours. The main body is mostly worked on straight needles, then the yoke is worked in the round.



Yarn

- Erika Knight British Blue 100 DK yarn, or equivalent DK (light worsted) weight 100% pure wool yarn; 100g/240yd/220m; manufacturer's tension 22 sts x 30 rows on 4mm (UK 8; US 6) needles –
 - ~ 4(4:5:5) balls of Mrs Dalloway 604, or mustard yarn (A)
 - ~ 2 balls of Cymbeline 601, or black yarn (B)
 - ~ 2 balls of Ballet Russe 606, or bright pink yarn (D)
- Erika Knight British Blue DK yarn, or equivalent DK (light worsted) weight 100% pure wool yarn; 25g/60yd/55m; manufacturer's tension 22 sts x 30 rows on 4mm (UK 8; US 6) needles –
 - ~ 2 balls of Mr Bhasin 116, or teal blue yarn (C)
 - ~ 1 ball of Milk 100, or cream yarn (E)

Needles

- Two pairs of straight knitting needles –
 - ~ 3.5mm (UK 9/10; US 4)
 - ~ 4mm (UK 8; US 6)
- Two pairs of circular knitting needles (**Note:** you may find it helpful to have both lengths to hand, using the longer circular when joining the yoke and switching to the shorter needle as the yoke is decreased) –
 - ~ 3.5mm (UK 9/10; US 4), 60cm (24in) long
 - ~ 4mm (UK 8; US 6), 60–80cm (24–32in) long
- Tapestry needle

Extras

- Stitch markers
- Stitch holders

Pattern tension

23 sts x 28 rows on 4mm (UK 8; US 6) needles

Pattern notes

The upper Back is shaped with short rows using the wrap and turn method (W&T). See 'Knitting Abbreviations' on page 37 for instructions on how to do this.

Size chart

		SIZE 1	SIZE 2	SIZE 3	SIZE 4
TO FIT BUST	CM	81–86	91–97	102–107	112–117
	IN	32–34	36–38½	40½–42	44–46
SLEEVE LENGTH	CM	44.5	44.5	44.5	45.5
	IN	17½	17½	17½	17¾
BACK LENGTH	CM	55	56	58.5	60
	IN	21¾	22	23	23½



CHARTS

- Yarn B (Cymbeline 601, or black)
- Yarn C (Mr Bhasin 116, or teal blue)
- Yarn D (Ballet Russe 606, or bright pink)
- Yarn E (Milk, or cream)
- K2tog
- No stitch

Chart A

- Row 1 (RS):** k3C, k3D, k1C, k3D, k2C.
Row 2 (WS): (p2C, p1D) three times, p3C.
Row 3: k1C, k3D, k2C, k1D, k2C, k3D.
Row 4: p1D, p2C, (p1D, p1C) twice, p1D, p2C, p1D, p1C.
Row 5: k1C, k1D, k3C, k3D, k3C, k1D.
Row 6: (p1C, p4D) twice, p2C.
Row 7: as row 5.
Row 8: as row 4.
Row 9: as row 3.
Row 10: as row 2.
Row 11: as row 1.

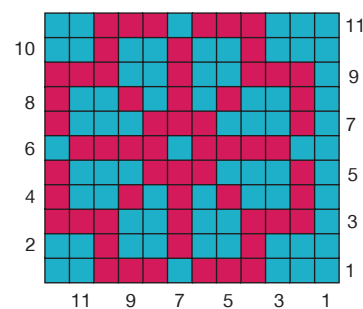


Chart C

- Row 1:** * k2C, k2B, k4C, k3B, k2C, k1B, k1C, k1B, k3C, k2B, k1C, rep from * to end.
Row 2: * k1C, k4B, k2C, (k1B, k1C) twice, k1B, k2C, k1B, k3C, k4B, rep from * to end.
Row 3: * k1C, k4B, k2C, (k1B, k1C) twice, k1B, k2C, k1B, k3C, k4B, rep from * to end.
Row 4: * k2C, k2B, k2Ctog, (k1C, k1B) three times, k2C, k1B, k2C, k2togC, k2B, k1C, rep from * to end (2 sts dec per repeat).
Row 5: * k7C, k3B, k2C, k1B, k1C, k1B, k5C, rep from * to end.

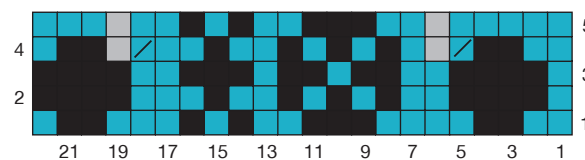


Chart B

- Row 1:** * k4C, k1D, k3C, k2D, k1C, k2D, k3C, k1D, k3C, k2D, k1C, k2D, rep from * to end.
Row 2: * k1C, k2togC, k1D, k1C, k1D, k2C, k2D, k1C, k2D, k2C, k1D, k1C, k1D, k2C, k2D, k1C, k2D, rep from * to end (1 st dec per repeat).
Row 3: * k1C, (k1D, k1C) twice, (k1D, k3C) twice, (k1D, k1C) twice, k1D, k3C, k1D, k2C, rep from * to end.
Row 4: * k2C, k1D, k1C, k1D, k2C, k2D, k1C, k2D, k2C, k1D, k1C, k1D, k2C, k2D, k1C, k2D, rep from * to end.
Row 5: * k3C, k1D, k2togC, (k1C, k2D) twice, k3C, k1D, k2togC, (k1C, k2D) twice, rep from * to end (2 sts dec per repeat).
Row 6: using yarn C, knit.

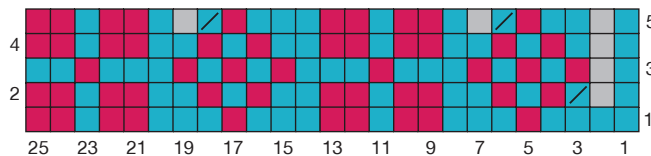


Chart D

- Row 1:** * k2D, (k3B, k4D) twice, k3B, k1D, rep from * to end.
Row 2: * k1D, (k5B, k2D) twice, k5B, rep from * to end.
Row 3: as round 2.
Row 4: * k2D, (k3B, k4D) twice, k3B, k1D, rep from * to end.
Row 5: * k2D, k2togD, k14D, k2togD, rep from * to end (2 sts dec per repeat).

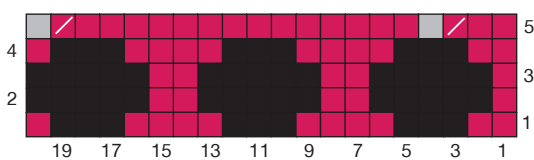


Chart E

- Row 1:** * k5C, k3E, k3C, k1E, k1C, k1E, k4C, rep from * to end.
Row 2: * k4C, (k1E, k1C) three times, k2C, k1E, k5C, rep from * to end.
Row 3: * k1C, k2togC, k1C, k2E, k1C, k2E, k2C, k3E, k1C, k2togC, k1C, rep from * to end (2 sts dec per repeat).
Row 4: * k3C, (k1E, k1C) three times, k2C, k1E, k4C, rep from * to end.
Row 5: * k2C, k2togC, k3E, k1C, k2togC, k1E, k1C, k1E, k3C, rep from * to end (2 sts dec per repeat).

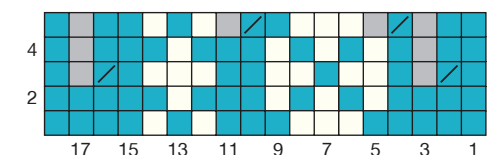
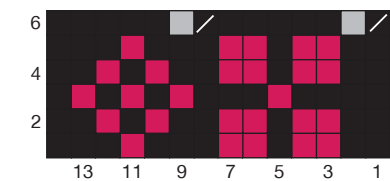


Chart F

- Row 1:** * k2B, k2D, k1B, k2D, k3B, k1D, k3B, rep from * to end.
Row 2: * k2B, k2D, k1B, k2D, k2B, k1D, k1B, k1D, k2B, rep from * to end.
Row 3: * k4B, k1D, k3B, (k1D, k1B) three times, rep from * to end.
Row 4: as round 2.
Row 5: as round 1.
Row 6: * (k2togB, k5B) twice, rep from * to end (2 sts dec per repeat).



PATTERN

Back

Using 3.5mm (UK 9/10; US 4) needles and yarn A, cast on 86(98:110:122) sts.

Row 1 (RS): * k1, p1, rep from * to end.

Cont rep row 1 until work measures 7.5cm (3in), ending with a RS row.

Next row (WS): rep row 1 and at the same time inc 3 sts evenly across the row (89(101:113:125) sts).

Change to 4mm (UK 8; US 6) needles.

Next row (RS): using yarn B, knit.

Next row (WS): p2B * p1A, p1B, rep from * to last 3 sts, p3B.

Next row: using yarn B, knit.

Next row: using yarn C, purl.

Next row (RS): k2, work row 1 of Chart A 7(8:9:10) times, k3.

Next row (WS): p3, work next row of Chart A 7(8:9:10) times, p2.

Cont working from Chart A as established until row 11 of the chart has been completed.

Next row (WS): using yarn C, purl. Fasten off yarn C.

Next row (RS): using with yarn B, knit.

Next row: p2B, * p1A, p1B, rep from * to last 3 sts, p3B.

Next row: using yarn B, knit. Fasten off yarn B.

Using yarn A only, cont straight in St st until piece measures 33(33:33:34)cm / 13(13:13:13½)in from cast-on edge, ending with a WS row.

SHAPE ARMHOLES

Cast off 3 sts at beg of next 2 rows (83(95:107:119) sts).

Cont in St st and shape armholes as follows:

Next row (RS): k2tog, knit to last 2 sts, SSK (2 sts dec).

Work 3 rows in St st.

Repeat last 4 rows 1(3:3:3) more times (79(87:99:11) sts).

SIZES 1, 3 AND 4 ONLY

Next row (RS): k2tog, knit to last 2 sts, SSK (2 sts dec).

Next row: purl.

Repeat last 2 rows 1(-:1:2) more times (75(-:95:105) sts).

ALL SIZES AGAIN

Place rem 75(87:95:105) sts on stitch holder and set aside.

Front

Work as for Back.

Sleeves

MAKE TWO

Using 3.5mm (UK 9/10; US 4) needles and yarn A, cast on 48(52:56:56) sts.

Row 1 (RS): * k1, p1, rep from * to end.

Rep row 1 until rib measures 7.5cm (3in), ending with a RS row.

Next row (WS): rep row 1 and inc 2 sts evenly across the row (50(54:58:58) sts).

Change to 4mm (UK 8; US 6) needles.

Next row (RS): using yarn B, knit and at the same time inc 1 st at each end of the row (52(56:60:60) sts).

Next row: p2B, * p1A, p1B, rep from * to last 2 sts, p2B.

Next row: using yarn B, knit.

Next row (WS): using yarn C, purl.

Read the following section carefully as you'll be working two sets of instructions at the same time:

Next row (RS): using yarn C, k2(4:0:0), work row 1 of Chart A 4(4:5:5) times.

Next row (WS): using yarn C, p2(4:0:0), work next row of Chart A 4(4:5:5) times.

Cont working from Chart A as established until row 11 of the chart has been completed.

Next row (WS): using yarn C, purl. Fasten off yarn C.

Next row: using yarn B, knit.

Next row: p2B, * p1A, p1B, rep from * to last 2 sts, p2B.

Next row: using yarn B, knit. Fasten off yarn B.

Using yarn A only, cont working in St st until sleeve measures 44.5(44.5:44.5:46)cm / 17½(17½:17½:18)in from cast-on edge, ending with a WS row.

AT THE SAME TIME inc 1 st at each end of seventh row of Chart A then every foll sixth row until you have 76(82:88:92) sts, working increased sts with yarn C to end of Chart A, then in correct colour for row. When increases are complete, work straight to given length.

SHAPE ARMHOLES

Cast off 3 sts at beg of next 2 rows (70(76:82:86) sts).

Row 1 (RS): k2tog, knit to last 2 sts, SSK (2 sts dec).

Work 1(3:3:3) row(s) in St st.

Repeat these 2(4:4:4) rows 4(0:2:4) more times (60(74:76:76)sts).

SIZE 1 ONLY

Next row (RS): k2tog, knit to last 2 sts, SSK (58 sts).

Next row: p2tog, purl to last 2 sts, p2tog (56 sts).

SIZES 2, 3 AND 4 ONLY

Next row (RS): k2tog, knit to last 2 sts, SSK (2 sts dec).

Next row: purl.

Rep these 2 rows –(5:3:0) more times –(62:68:74) sts).

ALL SIZES AGAIN

Place rem 56(62:68:74) sts on stitch holders.

Yoke

Using yarn A and 4mm (UK 8; US 6) circular needles, knit across 75(87:95:105) sts of Back, 56(62:68:74) sts of Left Sleeve, 75(87:95:105) sts of Front, 56(62:68:74)sts of Right Sleeve (262(298:326:358) sts).

Join to work in the round and PM to denote start of round.

DECREASE ROUND

Size 1: * (k19, k2tog) six times, k5, rep from * once more (250 sts).

Size 2: k10, * k2tog, k11, rep from * to last 2 sts, k2tog (275 sts).



Size 3: * (k0, k2tog) thirteen times, k7, rep from * once more (300 sts).

Size 4: (k9, k2tog) sixteen times, k4, k2tog, (k9, k2tog) sixteen times (325 sts).

ALL SIZES AGAIN

Remove marker, k11(3:6:23), PM to denote new start of round (this is to ensure that the charts are centred).

(**Note:** for Charts B to F, all rows are knitted, reading the chart from right to left.)

Next round: work row 1 of Chart B, working 25-st repeat 10(11:12:13) times across round.

Cont to work from chart as set until Chart B is complete, then work through Charts C to F (120(132:144:156) sts).

Using yarn B, knit 1 round.

Fasten off yarn B and cont in yarn A only.

Knit 1 round.

Shape the upper Back using short rows as follows:

Row 1 (RS): k34 (42:44:40), W&T.

Row 2 (WS): removing marker as you pass it, p44(48:52:56), W&T.

Row 3: k38(42:46:50), W&T.

Row 4: p32(36:40:44), W&T.

Row 5: k26(30:34:38), W&T.

Row 6: p20(24:28:32), W&T.

PM for new beginning of round.

Knit 1(1:2:2) rounds, picking up wraps and knitting them together with their st as you pass them.

SHAPE NECK

SIZE 1 ONLY

Round 1: * k10, k2tog, rep from * to end (110 sts).

Rounds 2 and 4: knit.

Round 3: * k16, k2tog, rep from * to last 2 sts, k2 (104 sts).

SIZE 2 ONLY

Round 1: * k9, k2tog, rep from * to end (120 sts).

Rounds 2 and 4: knit.

Round 3: * k13, k2tog, rep from * to end (112 sts).

SIZE 3 ONLY

Round 1: * k10, k2tog, rep from * to end (132 sts).

Rounds 2, 4 and 6: knit.

Round 3: * k20, k2tog, rep from * to end (126 sts).

Round 5: * k19, k2tog, rep from * to end (120 sts).

SIZE 4 ONLY

Round 1: * k11, k2tog, rep from * to end (144 sts).

Rounds 2, 4 and 6: knit.

Round 3: * k16, k2tog, rep from * to end (136 sts).

Round 5: * k15, k2tog, rep from * to end (128 sts).

ALL SIZES AGAIN

NECKBAND

Change to 3.5mm (UK 9/10; US 4) needles.

Next round: using yarn A, * k1, p1, rep from * to end.

Work in rib as set for 4cm (1½in).

Cast off.

To make up

Block each piece to your required measurements (see pages 40–41).

Join underarm, sleeve and side seams using mattress stitch (see page 39). Weave in any remaining ends (see page 38).

